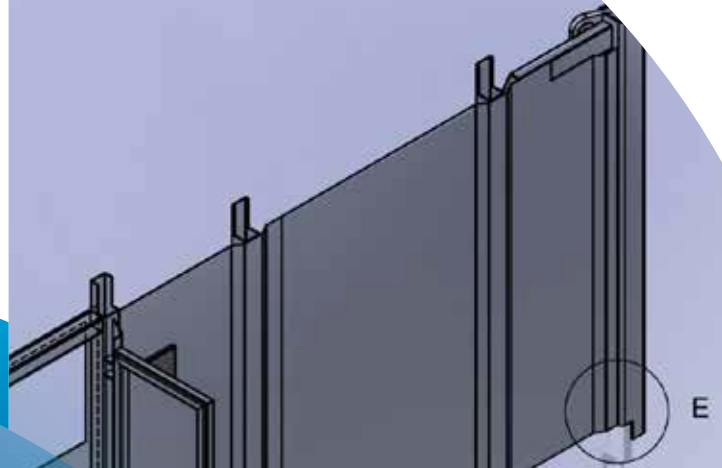


Sheet Metal Detailing Services



Door Retainer thk=2mm

DETAIL C
SCALE 1 : 5



Welded to primary
structure(floor)

Welded to primary
structure(floor)

| Your Trusted Partner for
Sheet Metal Detailing

About Company

At TrueCADD, we understand your need for comprehensive sheet metal design solutions that align perfectly with your project requirements. Our services include sheet metal design, drafting, 3D modeling, and shop drawing submittals.

With over 30 years of experience, we have developed a clear understanding of sheet metal design across diverse industries. Our skilled engineers, certified by the Steel Door Institute (SDI), utilize advanced software like SolidWorks and Inventor to create precise 3D models and 2D drawings tailored to your specific tooling capabilities.

We strictly adhere to international standards (ANSI, TEMA, IS, BS) and Design for Manufacturing (DFM) guidelines, guaranteeing meticulous designs and minimizing errors. For seamless collaboration, we work with a wide range of file formats, including .DWG and .PDF, .STEP, and .IGES.

Our commitment to quality is reflected in our 100% first-time right (FTR) record, which is a testament to our efficient project execution and cost control. We prioritize understanding your unique needs and delivering accurate, detailed designs that meet your precise specifications.



We empower your sheet metal design with precision and expertise



TrueCADD offers comprehensive sheet metal design and drafting solutions tailored to meet the unique needs of our clients, including sheet metal contractors, door and window manufacturers, and custom metal product manufacturers. Our team of skilled engineers and designers leverage the latest technology and industry best practices to deliver exceptional results with a perfect finish.

Our services include 2D sheet metal fabrication drafting, 3D modeling, and creating detailed shop drawings, incorporating precise geometric dimensions and tolerances while considering your specific machine shop capabilities and input. We are committed to providing high-quality services that help our clients streamline their manufacturing processes, reduce costs, and bring innovative products to market faster.



30+ SolidWorks &
DriveWorks
Certification



2,500+
Projects
Executed



18+ Steel Door
Institute Certified
Engineers



Well-versed
Engineering
Team



Round the
Clock Dedicated
Teams

Quality Assurance: Checks and Standards

International Standards

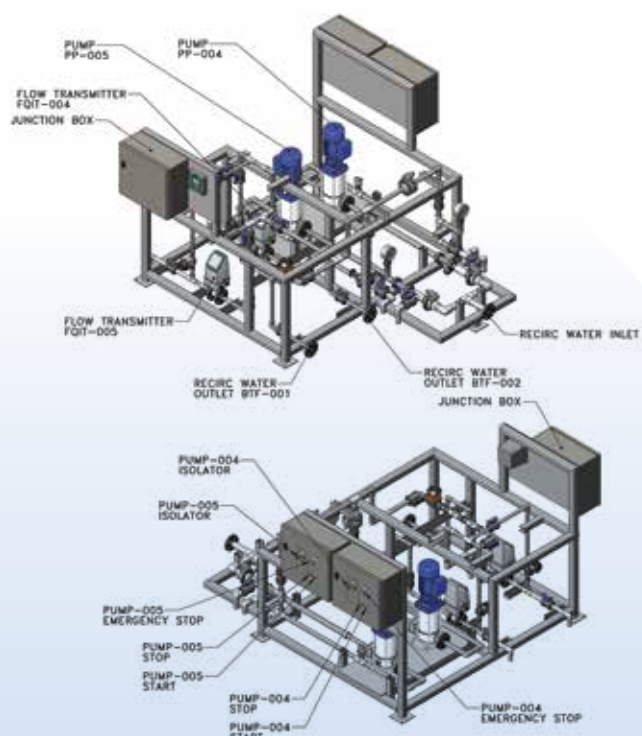
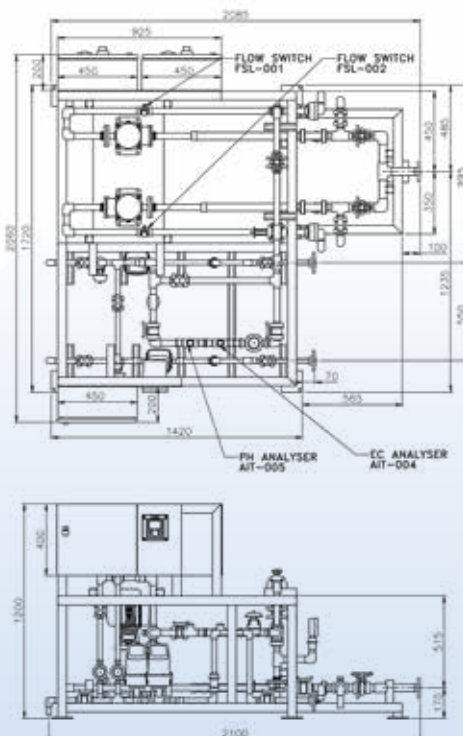
We validate all deliverables against ANSI, TEMA, IS, BS and other global standards. This ensures your products meet or exceed industry requirements.

DFM Guidelines

Our adherence to Design for Manufacturing (DFM) guidelines minimizes errors and optimizes production efficiency. This saves you time and money.

Error Minimization

Our approach effectively bridges the gap between design and manufacturing. This results in fewer errors and smoother production processes.



Our Sheet Metal Design Services Offerings



Sheet Metal Drafting and 3D Modeling

- Developing 3D models for design approvals and visualizations
- Detailed feature design with DFM incorporating bends, collars, edges, flanges, miters, ribs, swept flanges, etc.,
- Sheet metal part design with precise k-factor considerations as per DFM guidelines.
- Designing weldments for sheet metal assemblies and structures.
- Design automation for bespoke sheet metal products like doors, panels, shelves, and windows.

Manufacturing Drawings and Documentation

- Creating detailed shop drawings with gauge table considerations for fabrication.
- Producing drawings for manufacturing processes like bending, boring, drilling, extruding, punching, etc.
- SolidWorks flat pattern drafting for CNC machining, laser cutting, and plasma cutting.
- Providing nesting reports with DXF files for optimized material utilization.
- Creating comprehensive assembly and installation instructions.

CAD Conversion and Data Management

- Convert raster images, such as JPEG, PNG, and TIFF, into high-quality vector formats (DWG, DXF) for detailed CAD modeling.
- Digitizes paper drawings and blueprints into precise CAD files, making them easier to edit, archive, and manage
- convert outdated or legacy CAD files into modern formats, maintaining data integrity and compatibility with current CAD standards.
- Converts 2D drawings into detailed 3D CAD models, supporting advanced design, analysis, and visualization.

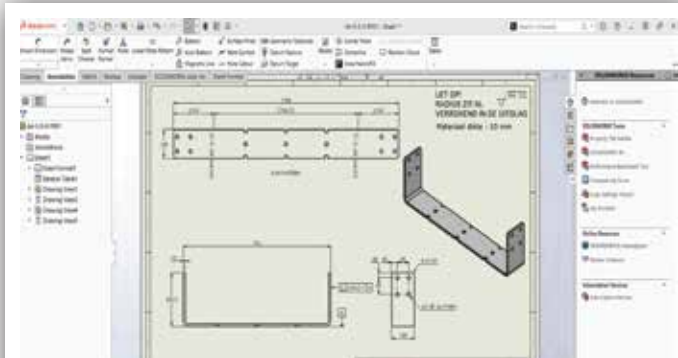
Design Automation with DriveWorks

- Automate SolidWorks models and develop product configurator using DriveWorks to expedite your sales, customer enquiries, and uplift deliverables quality.
- Customize your CAD requirements and provide design process automation, drafting automation, macros development, develop APIs, toolbar and customize user interface.
- Automate 2D manufacturing drawings with BOMs and custom 3D models by deploying a CAD configurator & scraping repetitive tasks.
- Automate your quote-to-cash process through CPQ solutions to enhance sales revenues and easily sell customized products through any device.

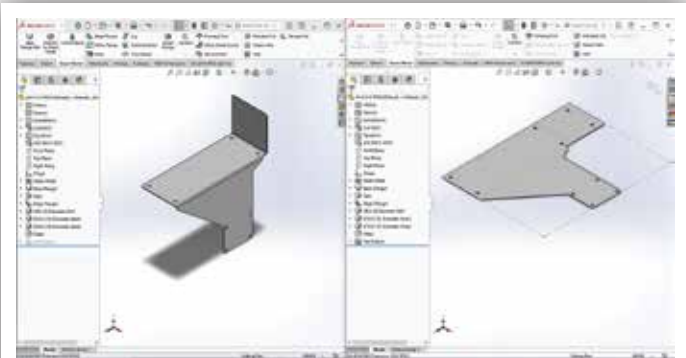
Software We Use



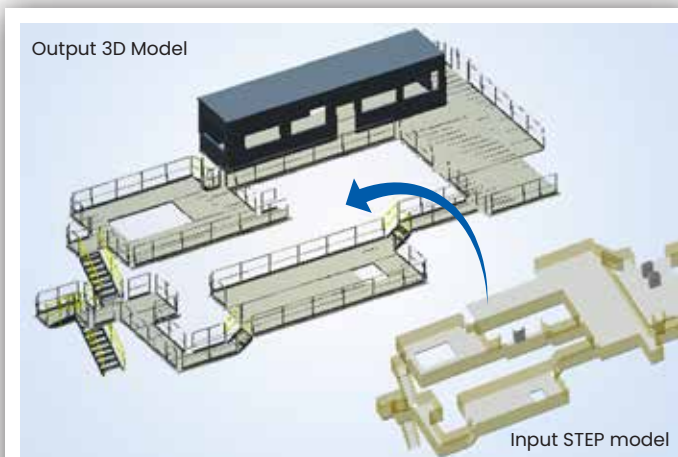
Some of Our BIM Projects Samples



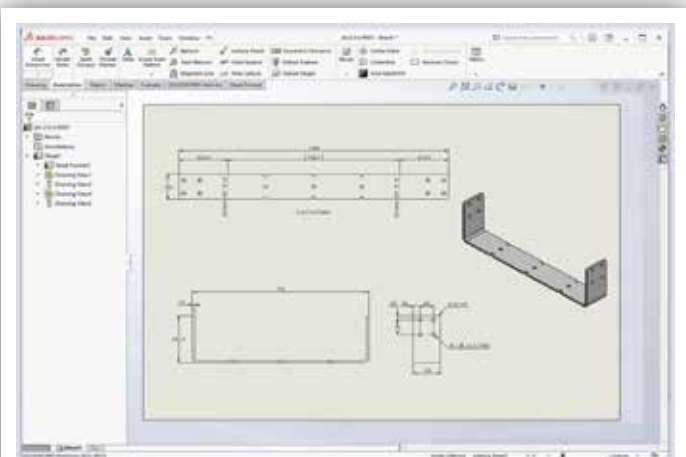
Sheet Metal MBD Model in SolidWorks



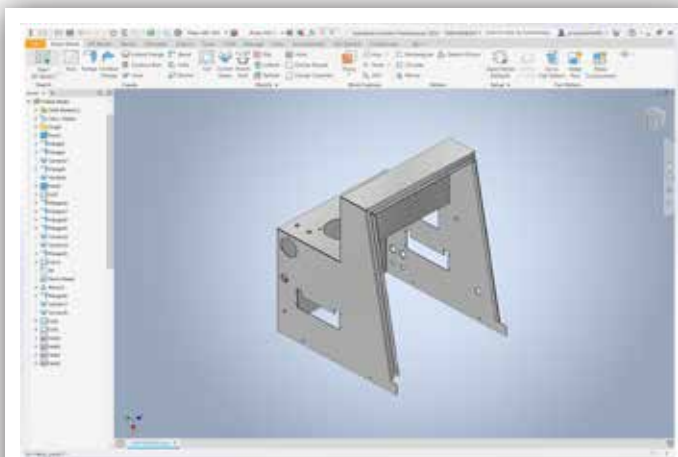
Sheet Metal Modeling in SolidWorks



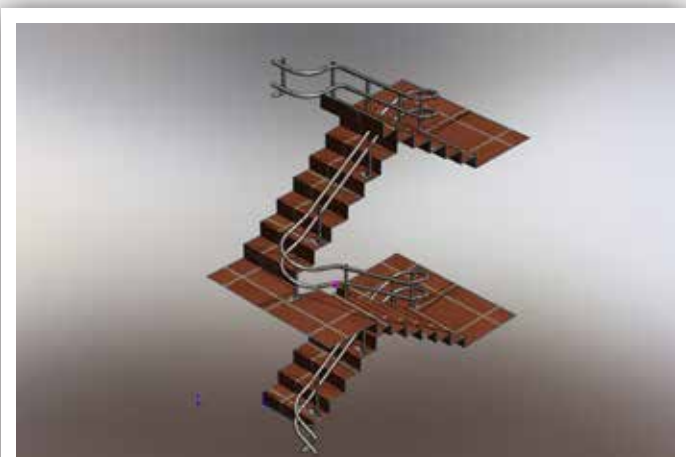
Walkways Model



Metal Forming in SolidWorks



Sheet Metal Part Modeling in Inventor



3D Model of Staircase

Our Customers



Sectors we cater to



Commercial
Facilities and Stores



Restaurants & Hotels



Hospitals and
Laboratories



Educational
Buildings



Government
Installations



Warehouses and
Industrial Units



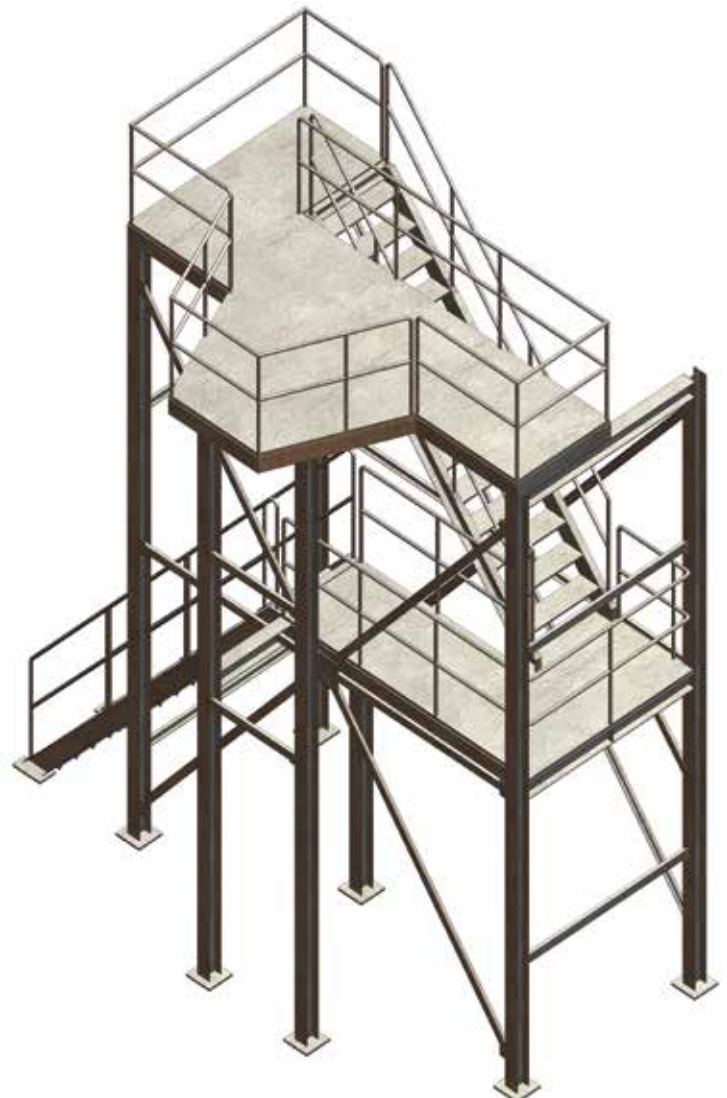
Financial Institutions



Retail Stores

Benefits of Outsourcing Sheet Metal Detailing Services With Us

- **Reduce costly errors:** TrueCADD's rigorous quality checks and adherence to international standards minimize design errors, saving you rework and replacement costs.
- **Accelerate project timelines:** Streamline your design-to-engineering cycle with efficient 2D drafting, 3D modeling, and shop drawing submittals.
- **Improve design communication:** Bridge the gap between design and fabrication with clear, concise, and accurate shop drawings for seamless manufacturing.
- **Gain access to expert engineers:** Leverage the expertise of SDI-certified engineers proficient in industry-standard CAD software and specialized tools.
- **Ensure manufacturability:** TrueCADD follows Design for Manufacturing (DFM) guidelines, ensuring your designs are optimized for fabrication and assembly.



Offices:

- New York – USA
- London – UK
- Ahmedabad – India

<https://www.truecadd.com>
info@truecadd.com

© 2025 TrueCADD. All Rights Reserved.

